

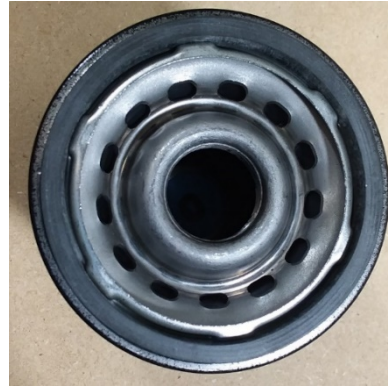


Subject: WPH2878 (OF1411) CONSOLIDATION INTO OF4477, OF4477BP, WPH2840, (HP4477)

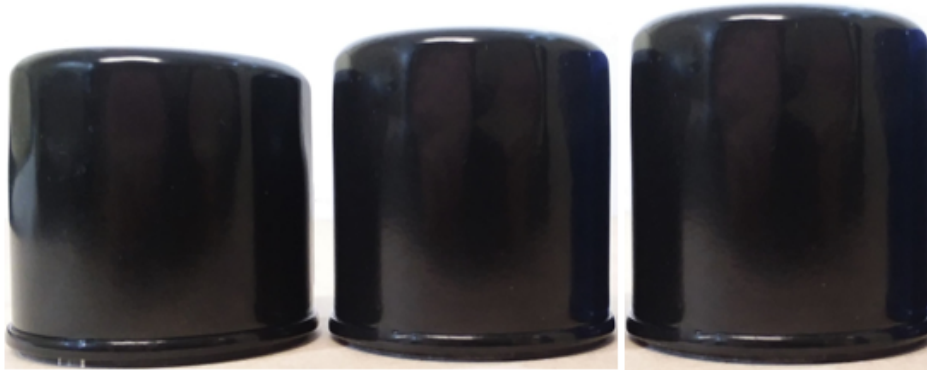
Part Number Consolidation: Toyota has updated the recommended oil filter on applications previously using WPH2878 (OF1411). The new recommendation from Toyota will allow the elimination of WPH2878 and consolidate the applications into OF4477 / WPH2840. Either filter is acceptable on the listed applications and covered under our warranty. Additionally, the OF4477 filter will be undergoing an upgrade (illustrated below) as a running change over the next few weeks. Please update your application software as soon as possible from your data provider.



The current OF4477, OF4477BP, HP4477, & WPH2878 filters used a common backplate which incorporated a standard spiral locked core within the filter media.



The new design incorporates a more robust backplate design and a stronger molded media core within the filter.



WPH2878

New OF4477, OF4477BP, & HP4477

Old OF4477, OF4477BP, & HP4477

The overall filter height will also change to a standard height for the new OF4477, OF4477BP, & HP4477. This height change will not create any interference issues for the installer. This consolidation creates a stronger more robust filter while improving efficiencies within the service bay.

For more information or purchase, please call Technical Services at 1-800-882-0890. Champion Laboratories is an ISO/TS16949 registered company. The information contained herein is intended to be used as an indication of performance and is not meant to be used as an exact specification. The information is based upon test data and is subject to test and material variability. Changes may occur based upon technology, process and material innovation as Champion Laboratories strives to attain the highest levels of performance and customer satisfaction. These changes may occur without notification.

Engine and equipment manufacturer's warranties remain in effect when using Champ filters